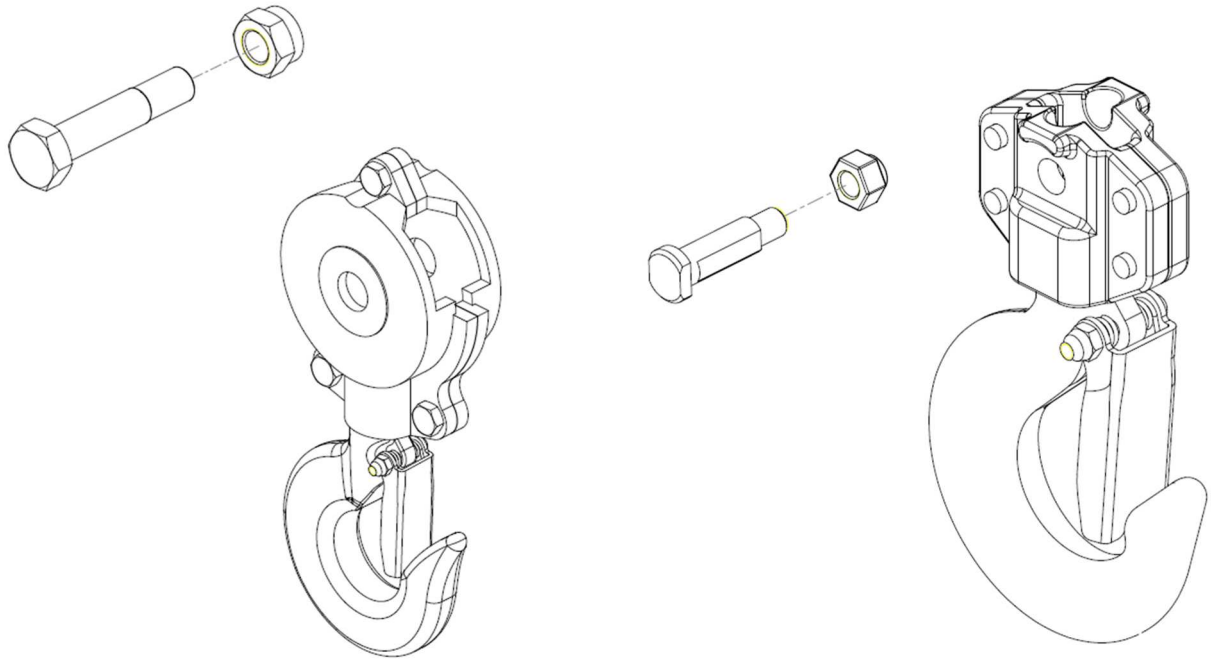


SPECIFICA PRODOTTO
ISTRUZIONI PER IL MONTAGGIO



**KIT RICAMBI CORPI GANCI INFERIORI
PER PARANCHI A CATENA E A LEVA**

La lingua originale della presente specifica è quella Italiana.

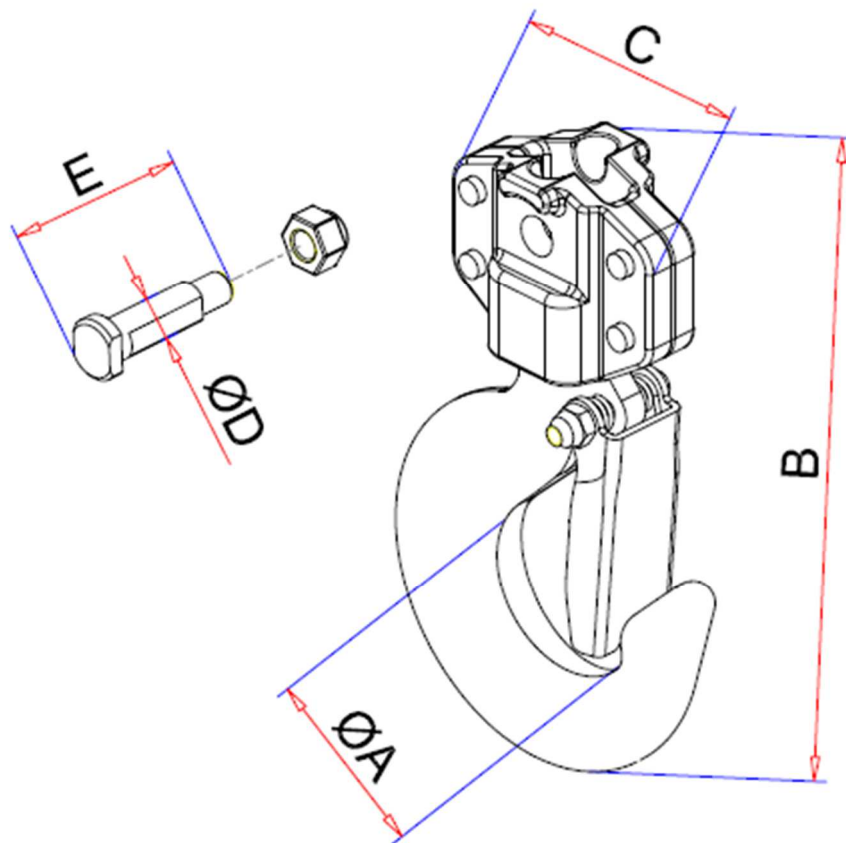
Sede produttiva **Accessori per funi ROBUR**
Zona Industriale – C.da S. Nicola
67039 SULMONA (L'AQUILA)
Tel. +39.0864.2504.1 – Fax +39.0864.253132
www.beta-tools.com – info@roburitaly.com

CODICE GANCIO	PARANCO A CATENA	WLL (t)
081430560	8143	0.5
081430561	8143	1.0
TBD	8143	1.5
081430562	8143	2.0
081430563	8143	3.0
081430564	8143	5.0

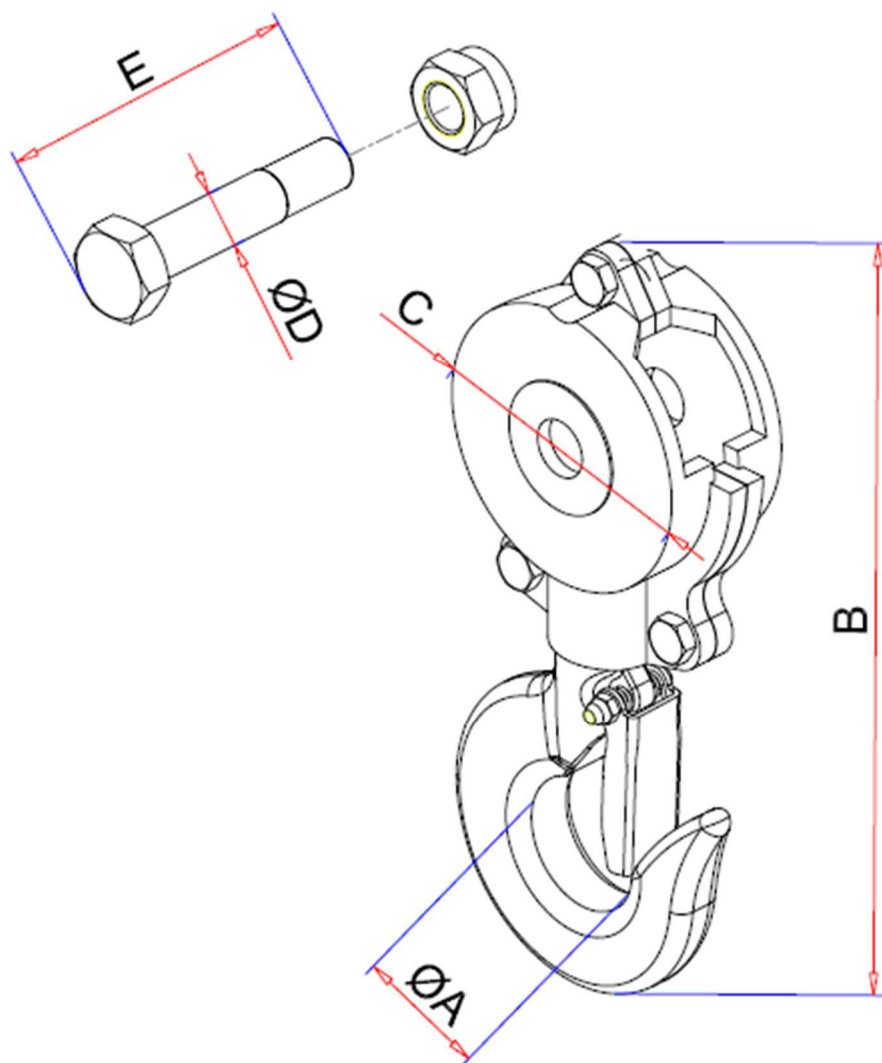
CODICE GANCIO	PARANCO A LEVA	WLL (t)
081460560	8146	0.75
081460561	8146	1.5
081460562	8146	3.0
081460563	8146	6.0

Caratteristiche dimensionali:

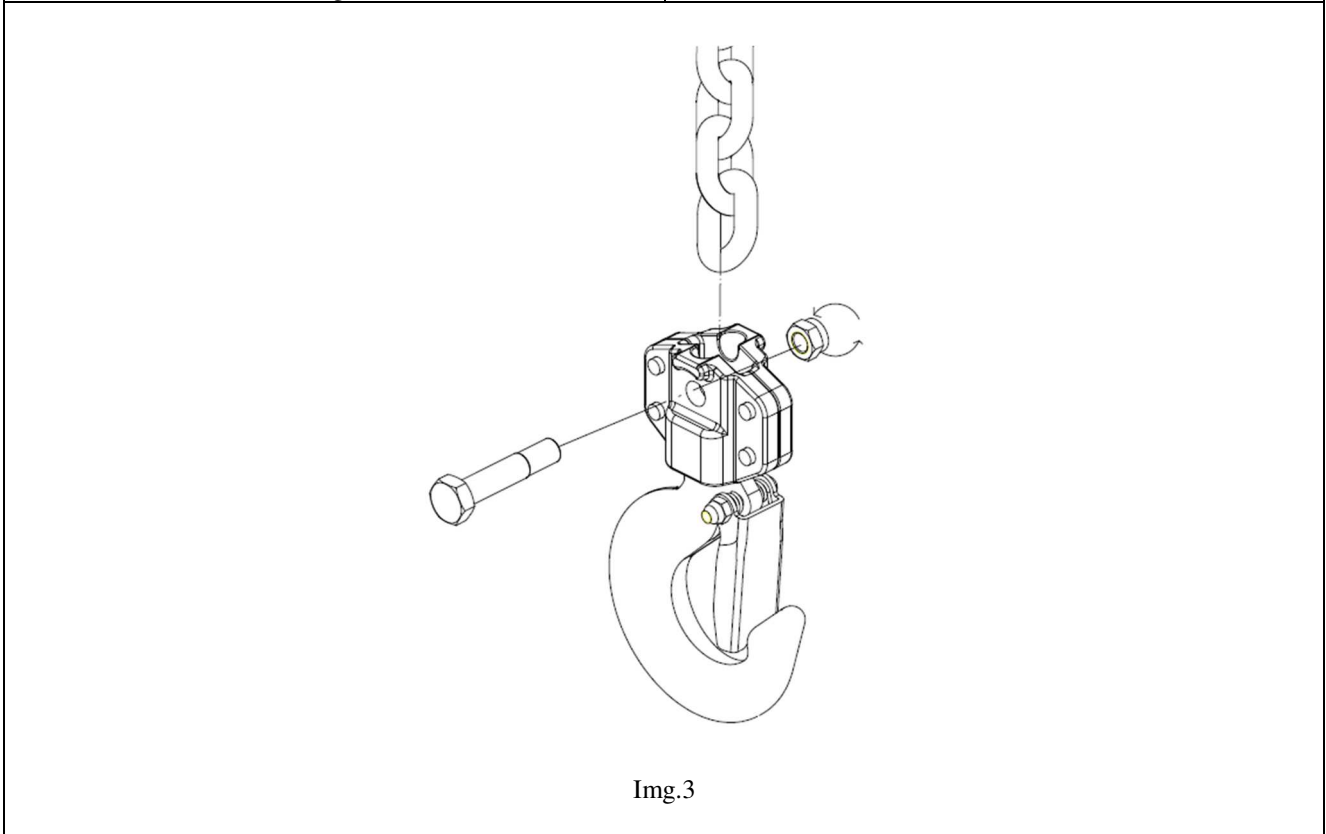
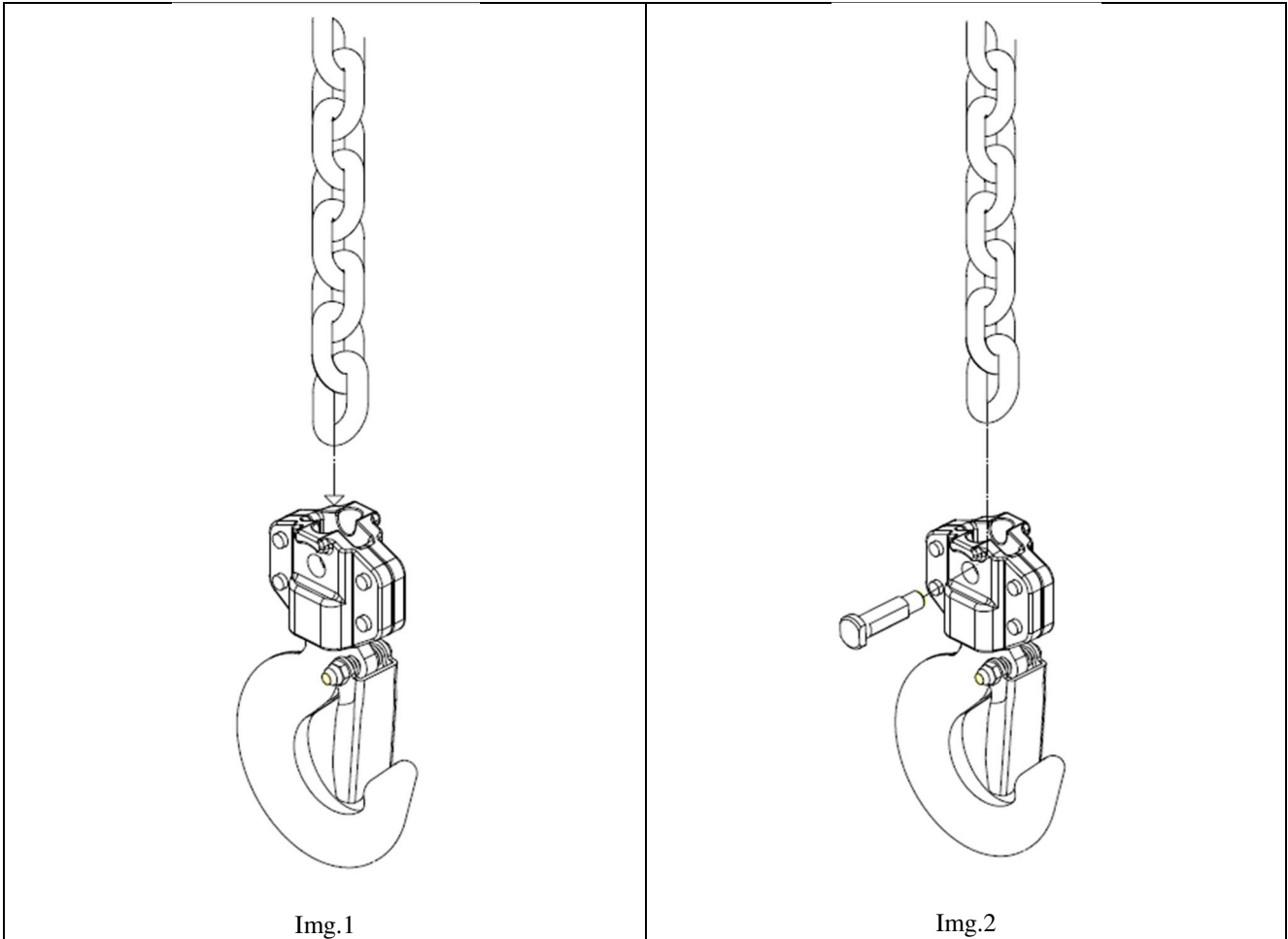
Codice	WLL (t)	Ø A	B	C	ØD	E
081430560	0,5	35	128	52	6	32
081430561	1,0	42	141	53	7,5	36
N.A.	1,5	/	/	/	/	/
081430562	2,0	43	159	60	10	39



Codice	WLL (t)	Ø A	B	C	ØD	E
081430563	3,0	49	258	86	20,2	58
081430564	5,0	71	334	108	25	76

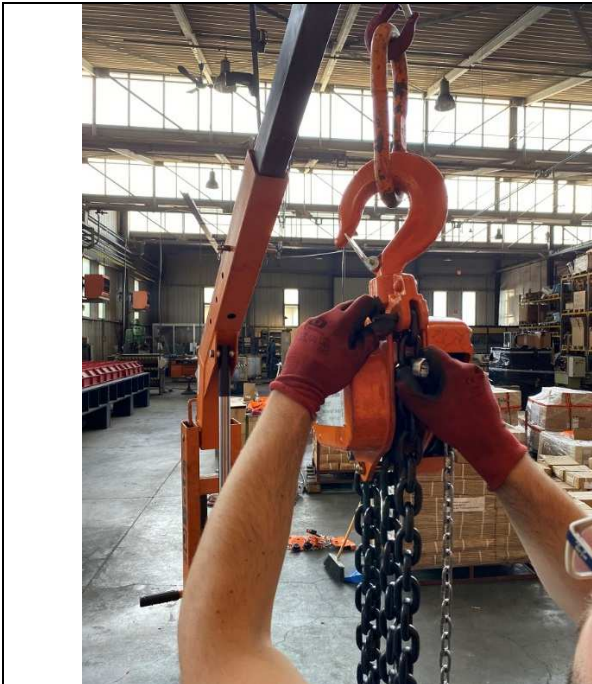


Sostituzione gancio inferiore (procedura valida per paranchi a catena 8143 da 0.5t, 1.0t, 1.5t, 2t e paranchi a leva 8146 da 0.75t, 1.5t e 3t)

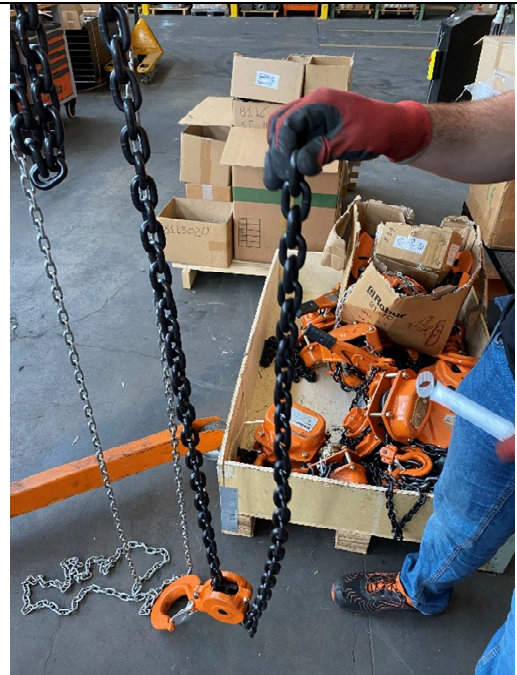


-
- 1) Inserire la maglia di catena nella propria sede all'interno del gancio. (Img. 1)**
 - 2) Allineare il perno filettato con il foro laterale sul corpo del gancio e inserirlo per bloccare la catena. (Img. 2)**
 - 3) Avvitare il dado su perno filettato e serrare. (Img. 3)**

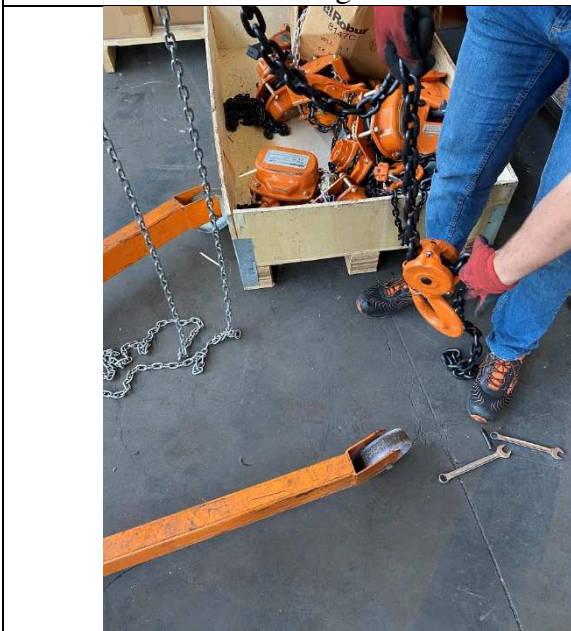
Sostituzione gancio inferiore (procedura valida per paranchi a catena 8143 da 3.0t, 5.0t, e paranchi a leva 8146 da 6.0t)



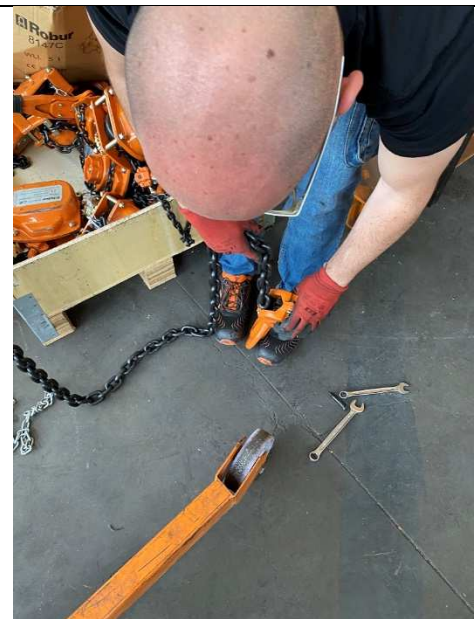
Img.1



Img.2



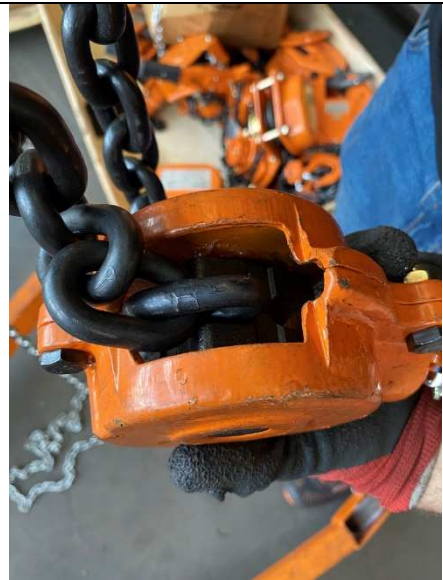
Img.3



Img.4



Img.5



Img.6



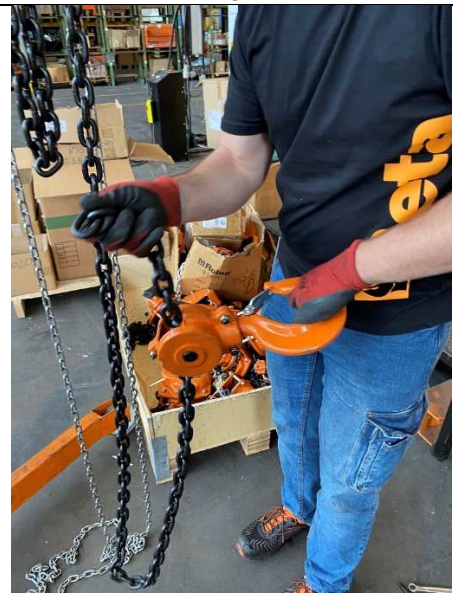
Img.7



Img.8



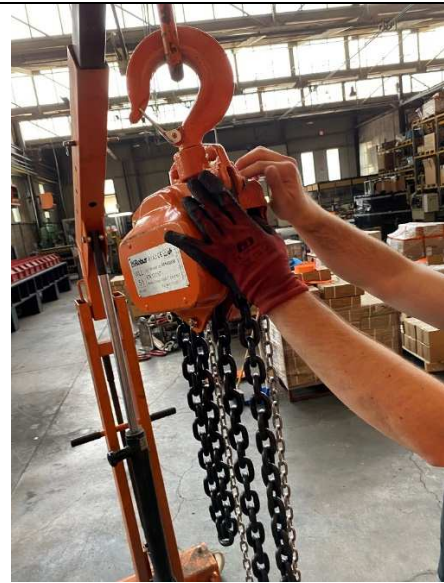
Img.9



Img.10



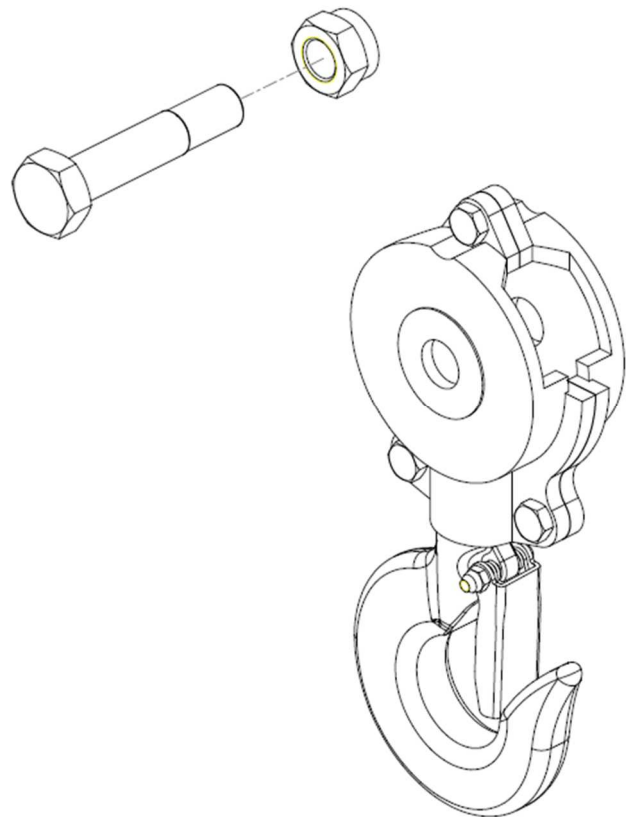
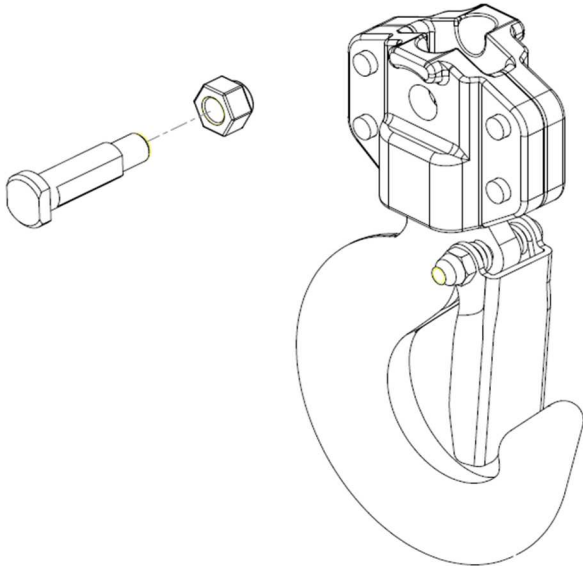
Img.11



Img.12

- 1. Smontare la catena dal gancio superiore rimuovendo il perno di blocco catena sul gancio superiore. (img.1)**
- 2. Estrarre la catena dal gancio inferiore rotto. (img.3-4)**
- 3. Posizionare il gancio in posizione trasversale. (img.5)**
- 4. Posizionare la catena con la prima maglia posta trasversalmente sull'alloggiamento della puleggia. (img.6)**
- 5. Con il gancio nella medesima posizione far ruotare la puleggia manualmente di mezzo giro così da permettere alla catena di inserirsi correttamente. (img.7)**
- 6. Mettere il gancio in verticale continuando a far ruotare la puleggia per far uscire il capo morto della catena dall'altra parte del gancio. (img.8-9)**
- 7. Tirare il capo morto della catena. (img.10)**
- 8. Posizionare il capo morto della catena sul gancio superiore e fissarla con il perno di blocco catena sul gancio superiore. (img.11)**
- 9. Stringere il dado sul perno filettato. (img.12)**

PRODUCT SPECIFICATIONS
INSTRUCTIONS FOR ASSEMBLY



**KIT OF LOWER HOOK BODIES
ITEM 8143-8146RKC**

The original language of this technical specification is Italian

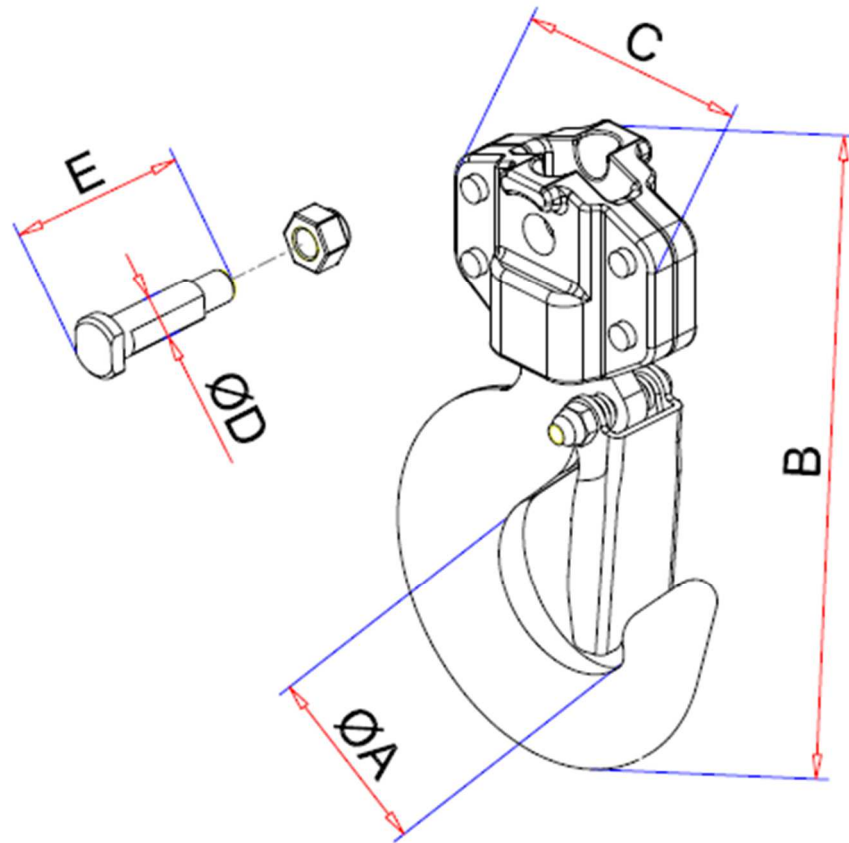
Manufacturing site **ROBUR wire rope accessories**
Zona Industriale – C.da S. Nicola
I-67039 SULMONA (L'AQUILA)
Tel. +39.(0)864.2504.1 – Fax +39.(0)864.253132
www.beta-tools.com – info@roburity.com

HOOK CODE	HAND CHAIN BLOCK	WLL (t)
081430560	8143	0.5
081430561	8143	1.5
081430562	8143	2.0
081430563	8143	3.0
081430564	8143	5.0

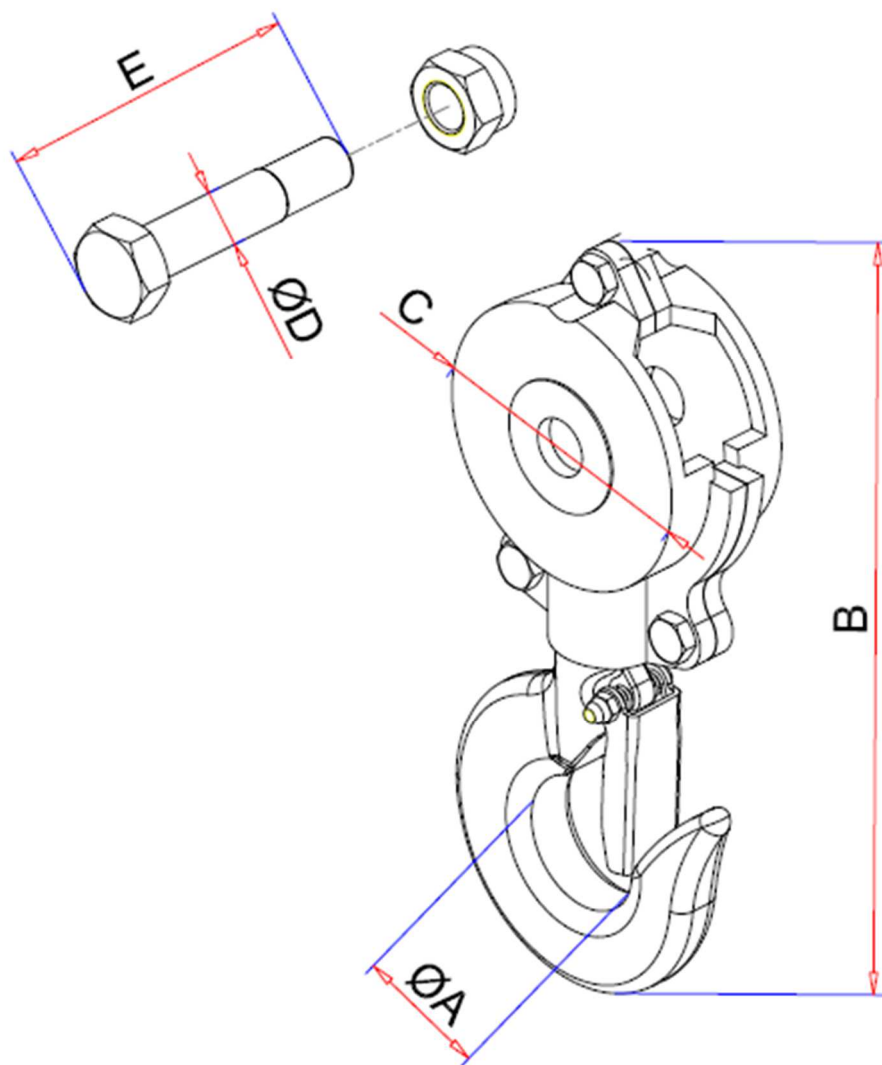
HOOK CODE	HAND LEVER HOIST	WLL (t)
081460560	8146	0.75
081460561	8146	1.5
081460562	8146	3.0
081460563	8146	6.0

Dimensional characteristics:

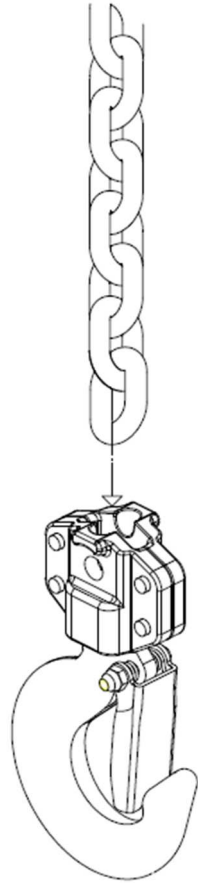
Codice	WLL (t)	Ø A	B	C	ØD	E
081430560	0,5	35	128	52	6	32
081430561	1,0	42	141	53	7,5	36
N.A.	1,5	/	/	/	/	/
081430562	2,0	43	159	60	10	39



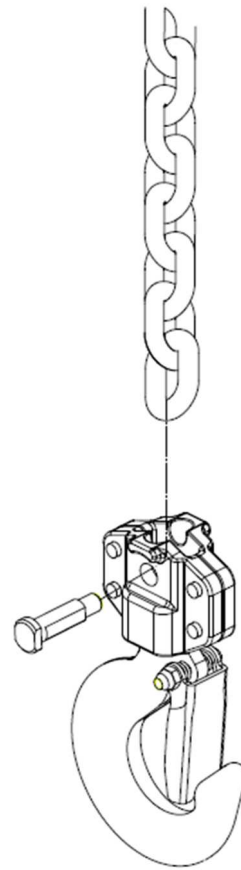
Codice	WLL (t)	Ø A	B	C	ØD	E
081430563	3,0	49	258	86	20,2	58
081430564	5,0	71	334	108	25	76



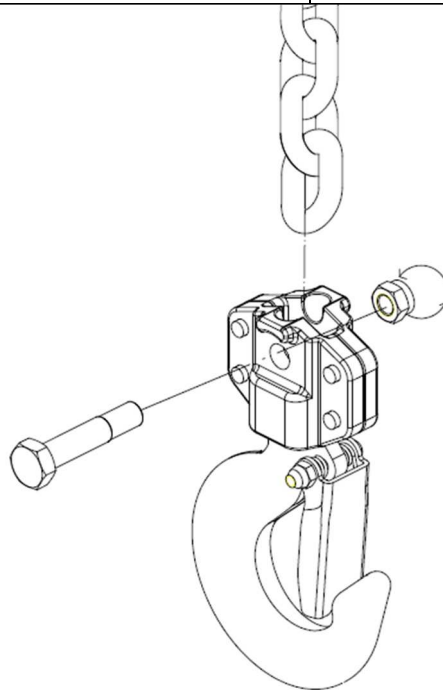
Lower hook installation (valid for hand chain block 8143: 0.5t, 1.0t, 1.5t, 2t and hand lever hoist 8146: 0.75t, 1.5t and 3t)



Img.1



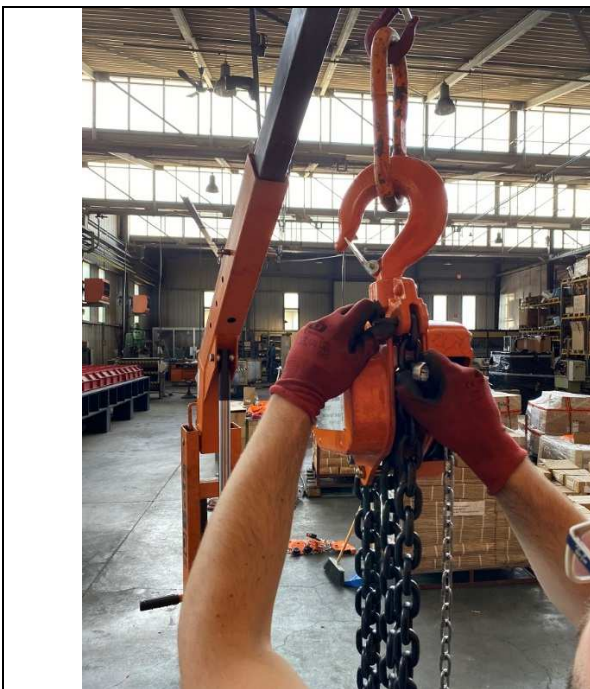
Img.2



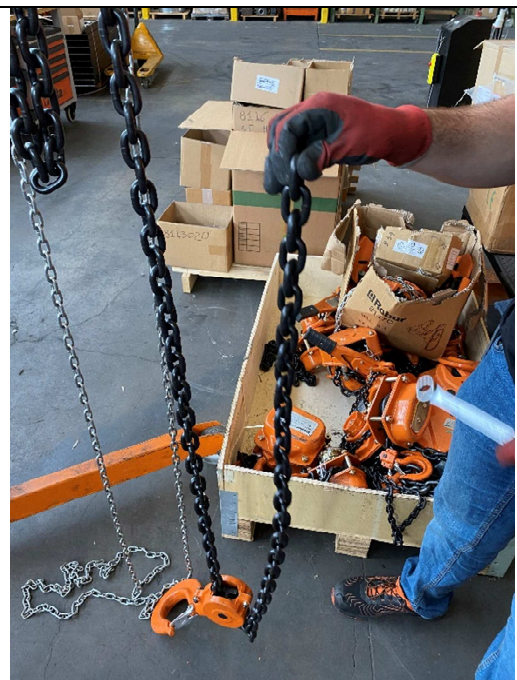
Img.3

- 1) **Fill-in the chain link into the hook body. (img.1)**
- 2) **Align the bolt with lateral hole and put-it in to lock the chain. (img.2)**
- 3) **Tight the nut and lock the bolt in hook body. (img.3)**

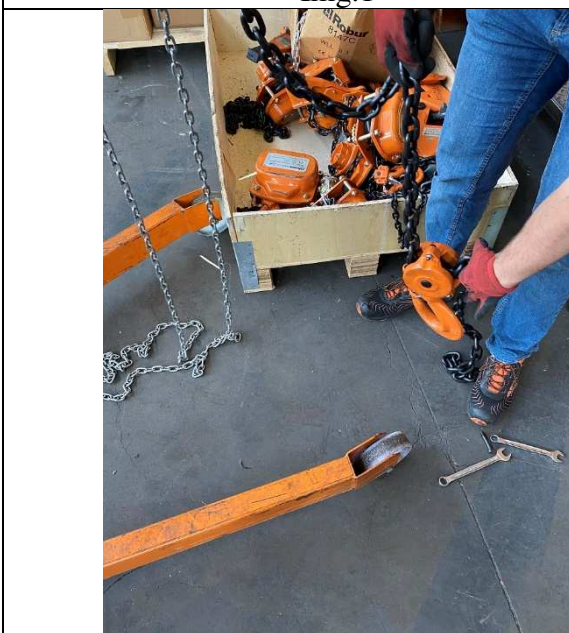
Lower hook installation (valid for hand chain block 8143: 3.0t and 5.0t and hand lever hoist 8146 by 6.0t)



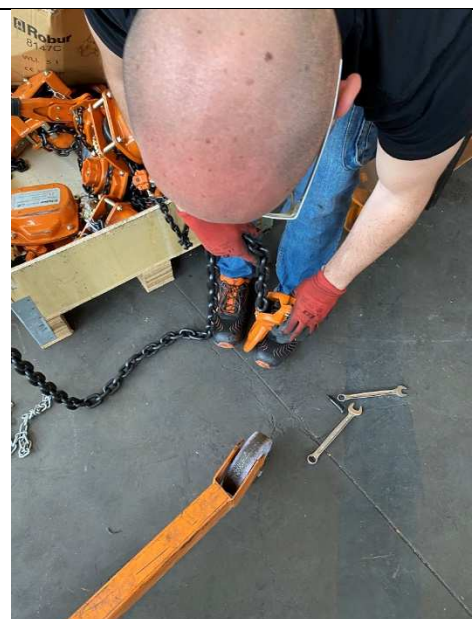
Img.1



Img.2



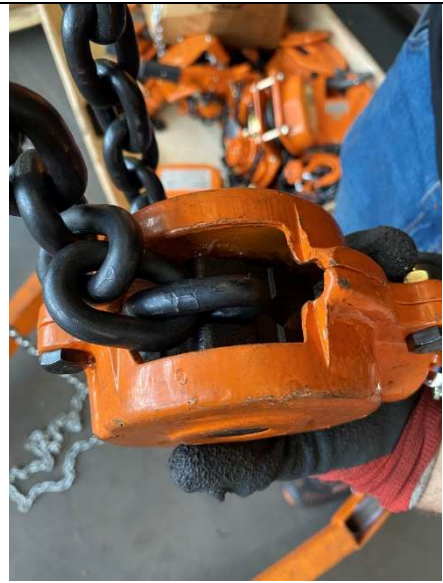
Img.3



Img.4



Img.5



Img.6



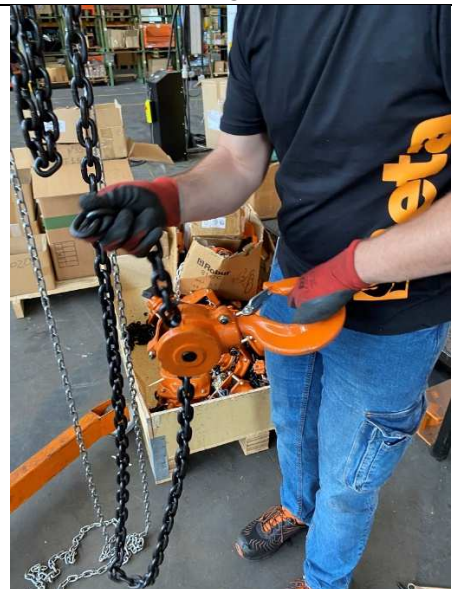
Img.7



Img.8



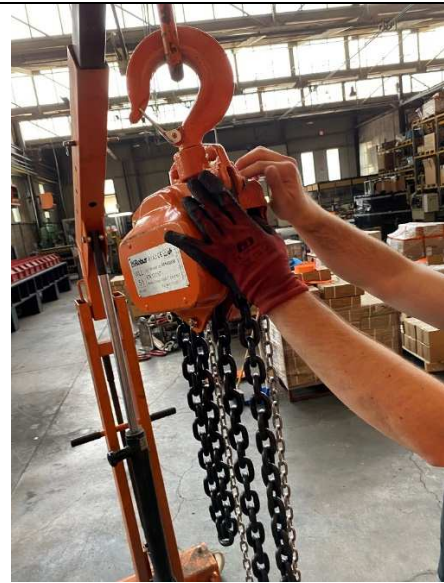
Img.9



Img.10



Img.11



Img.12

- 1. Take off the chain from the upper hook unbolting the locking pin chain. (img.1)**
- 2. Take off the chain from the old hook. (img.3-4)**
- 3. Take the hook in transverse position. (img.5)**
- 4. Insert the chain with the chain link in vertical position.(img.6)**
- 5. With the hook in the same position rotate the pulley for half turn. (img.7)**
- 6. Put the hook in vertical position and continue to rotate the pulley until the dead side of the chain comes out. (img.8-9)**
- 7. Pull the dead side of the chain. (img.10)**
- 8. Lock the chain to the upper hook with locking pin. (img.11)**
- 9. Tight the nut and lock the bolt on hook bodies. (img.12)**