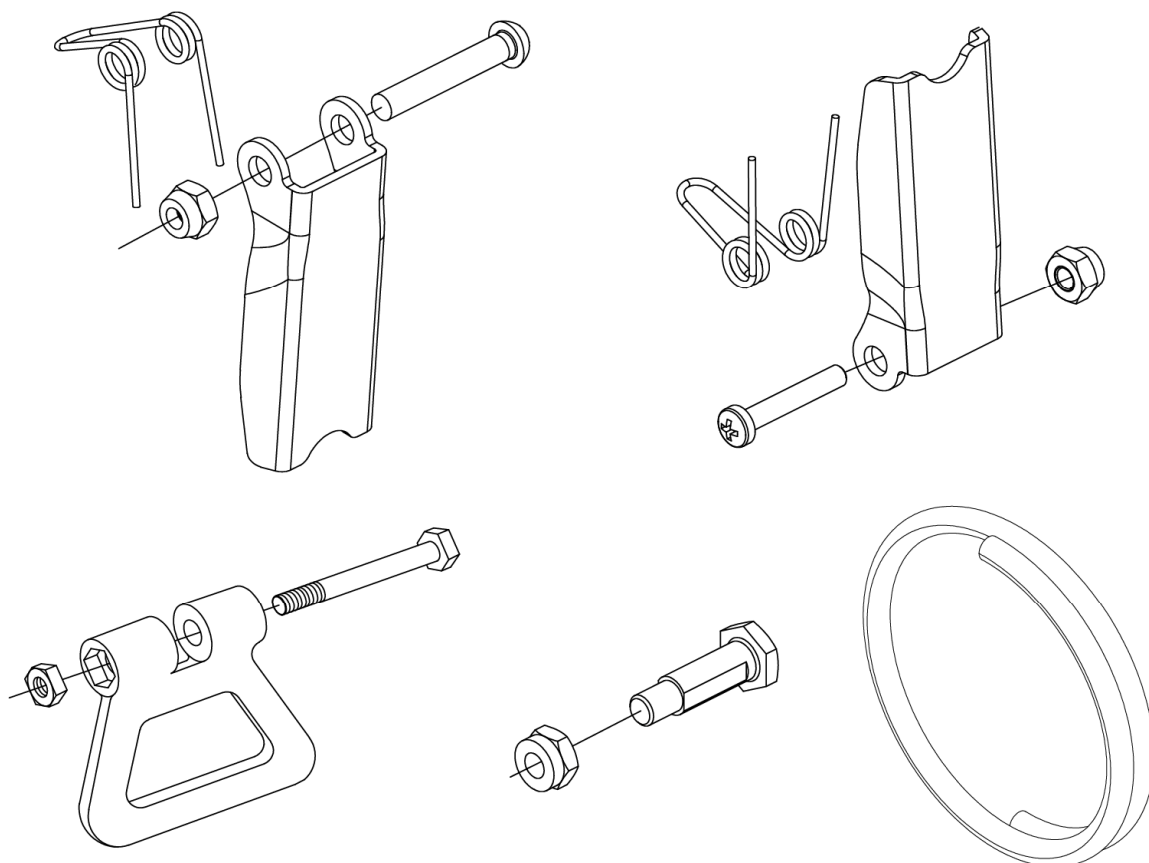


SPECIFICA PRODOTTO
ISTRUZIONI PER IL MONTAGGIO



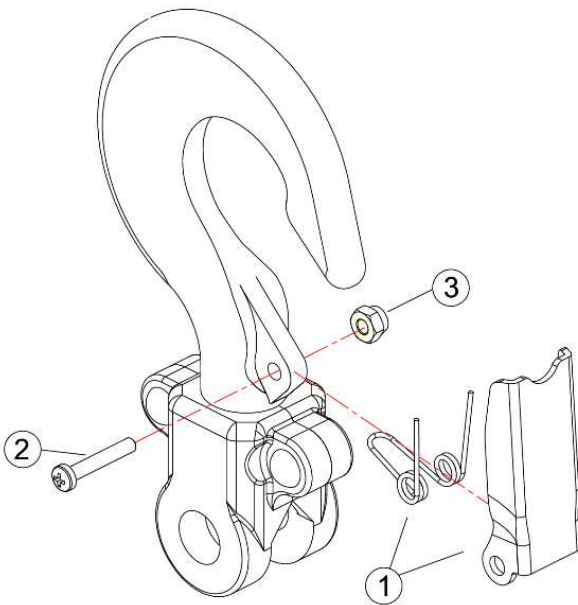
KIT LINGUETTE-PERNI-FINECORSA
ARTICOLO 8146RK-8146CRK

La lingua originale della presente specifica è quella Italiana.

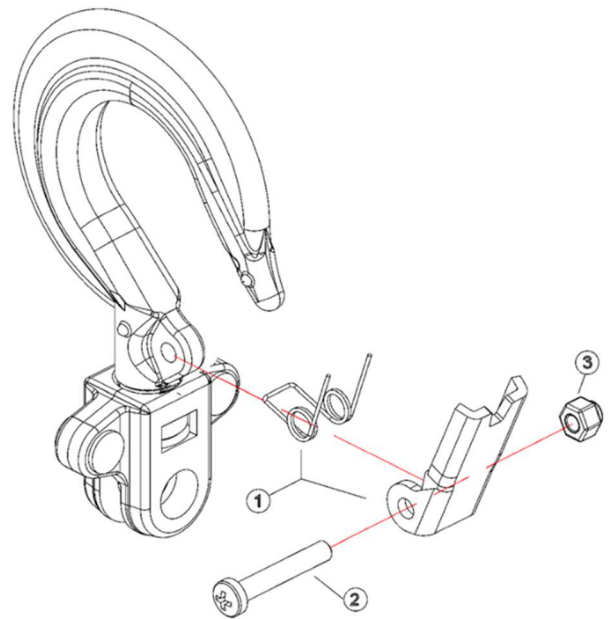
Sede produttiva **Accessori per funi ROBUR**
Zona Industriale – C.da S. Nicola
67039 SULMONA (L'AQUILA)
Tel. +39.0864.2504.1 – Fax +39.0864.253132
www.beta-tools.com – info@roburity.com

CODICE	PARANCO A LEVA	WLL Kg
081460902	8146C	0.25
081460908	8146	0.75
081460915	8146	1.5
081460930	8146	3.0
081460960	8146	6.0

Linguette per gancio superiore



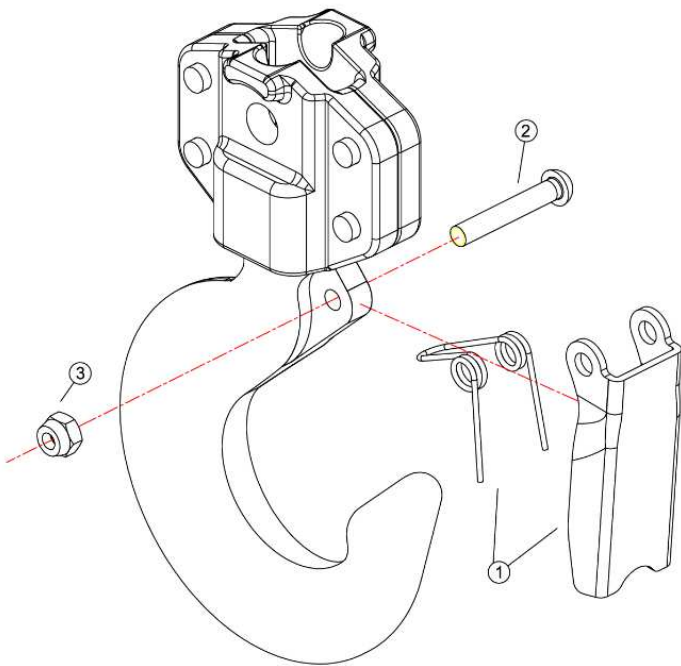
Art. 8146



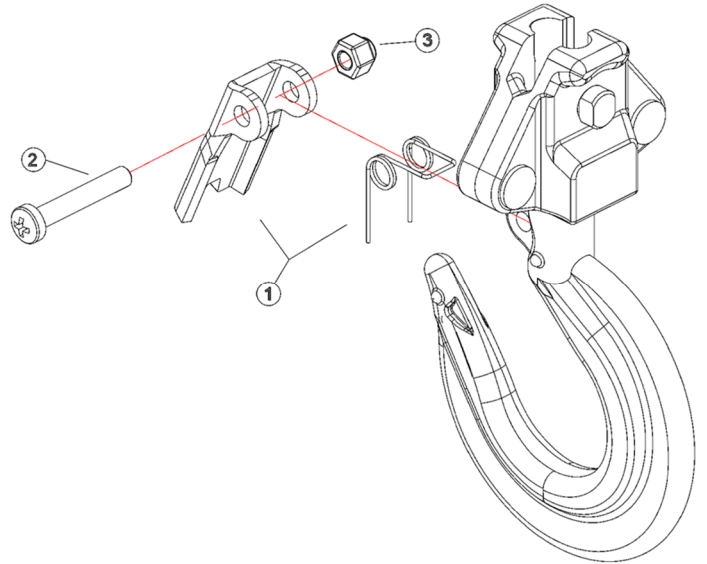
Art. 8146C

- 1) Allineare i fori della molla e della linguetta con il relativo foro sul gancio.**
- 2) Inserire la vite nel relativo foro sul gancio.**
- 3) Avvitare il dado e serrare.**

Linguette per gancio inferiore



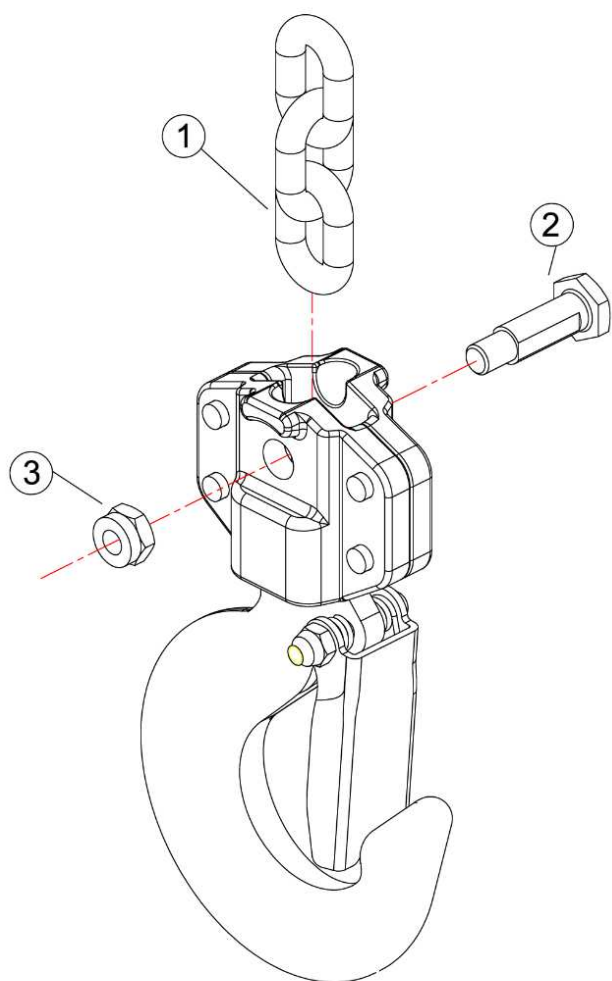
Art. 8146



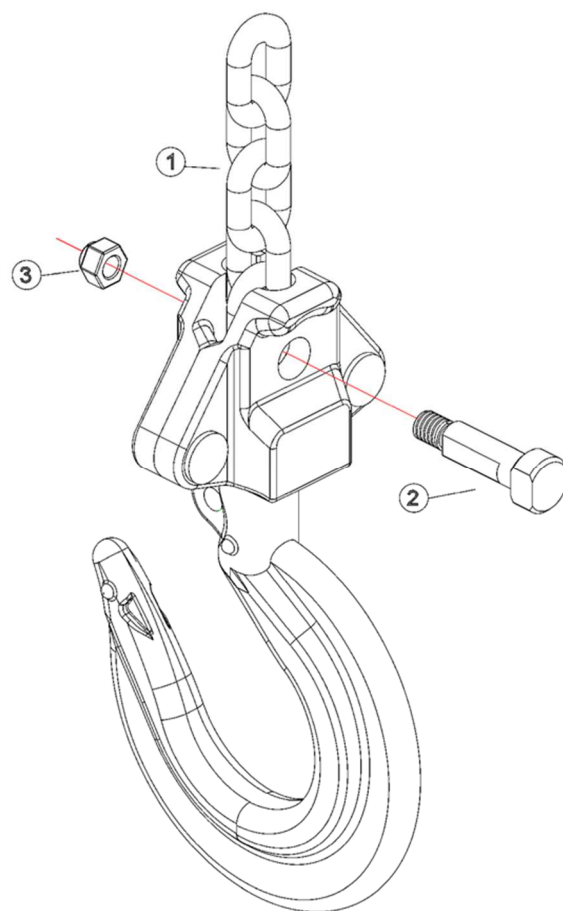
Art. 8146C

- 1) Allineare i fori della molla e della linguetta con il relativo foro sul gancio.**
- 2) Inserire la vite nel relativo foro sul gancio.**
- 3) Avvitare il dado e serrare.**

Perno di blocco catena



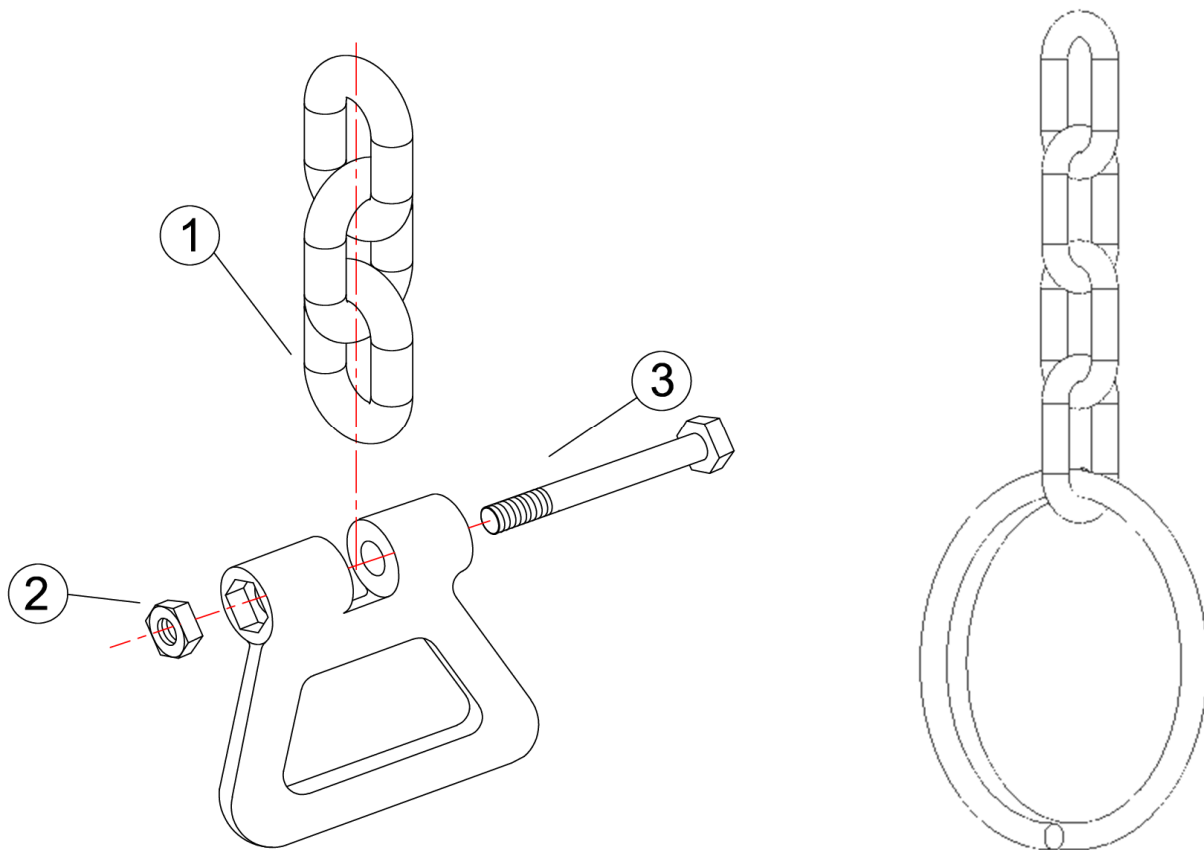
Art. 8146



Art. 8146C

- 1) Inserire la maglia di catena nella propria sede all'interno del gancio.**
- 2) Inserire il perno filettato nel relativo foro sul gancio.**
- 3) Avvitare il dado e serrare.**

Finecorsa



Art. 8146

Art. 8146C

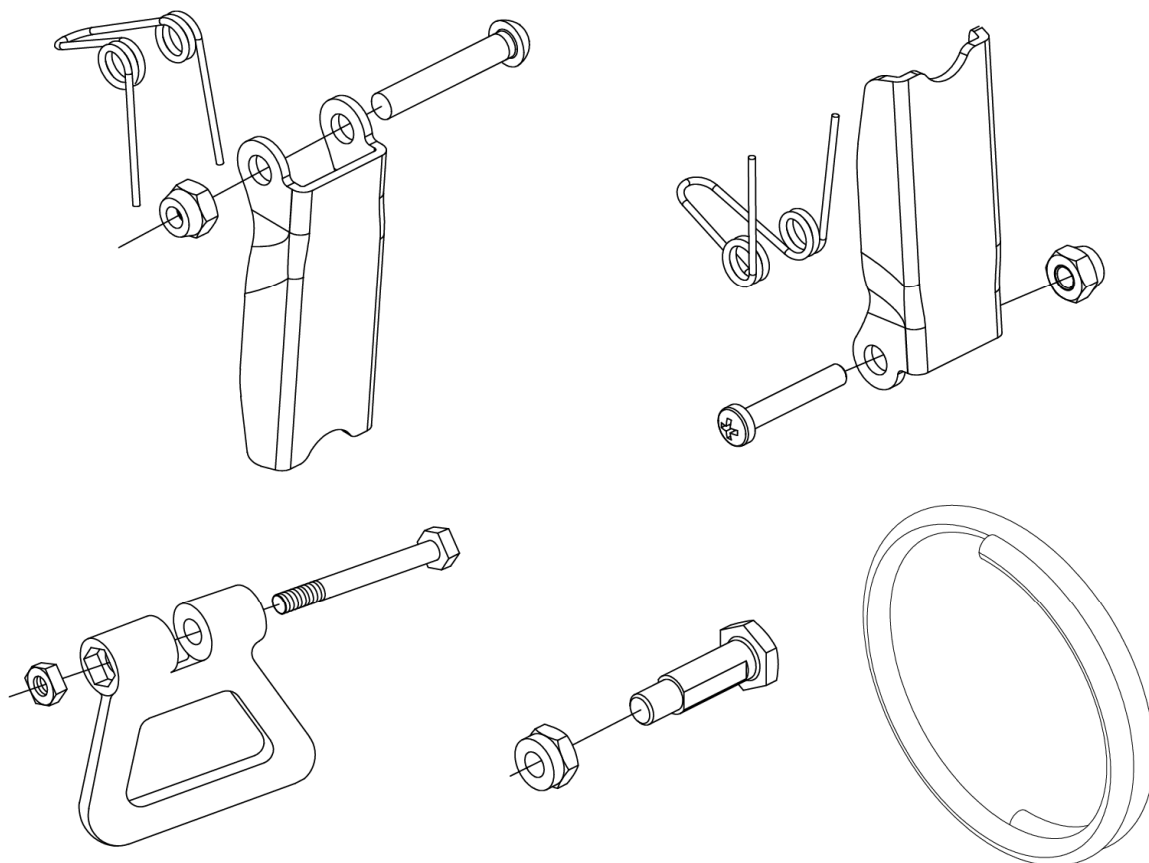
Art. 8146

- 1) **Inserire l'ultima maglia del capo morto della catena nella fessura del finecorsa.**
- 2) **Inserire il dado nella relativa sede sul finecorsa.**
- 3) **Inserire la vite nel relativo foro sul finecorsa e serrare.**

Art. 8146C

Inserire l'anello nell'ultima maglia del capo morto della catena.

PRODUCT SPECIFICATIONS
INSTRUCTIONS FOR ASSEMBLY



SAFETY LATCHES-CHAIN LOCK PIN-END OF RUN KIT
ITEM 8146RK-8146CRK

The original language of this technical specification is Italian

Manufacturing site **ROBUR wire rope accessories**

Zona Industriale – C.da S. Nicola

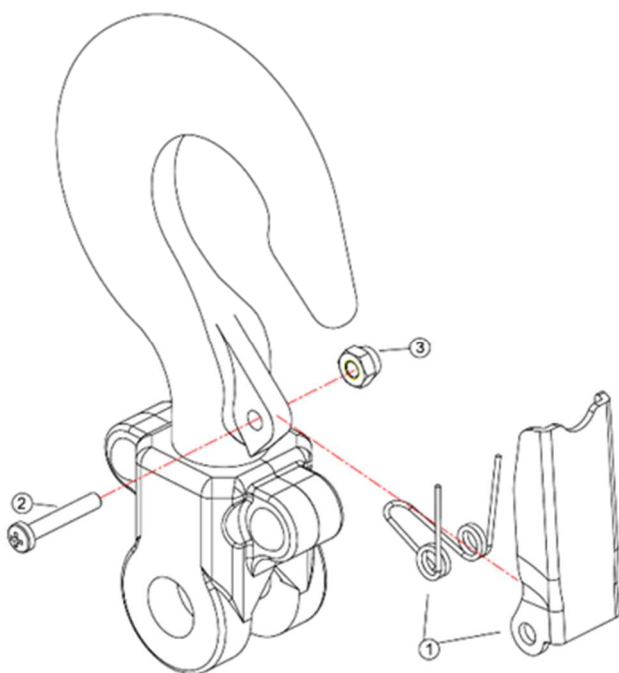
I-67039 SULMONA (L'AQUILA)

Tel. +39.(0)864.2504.1 – Fax +39.(0)864.253132

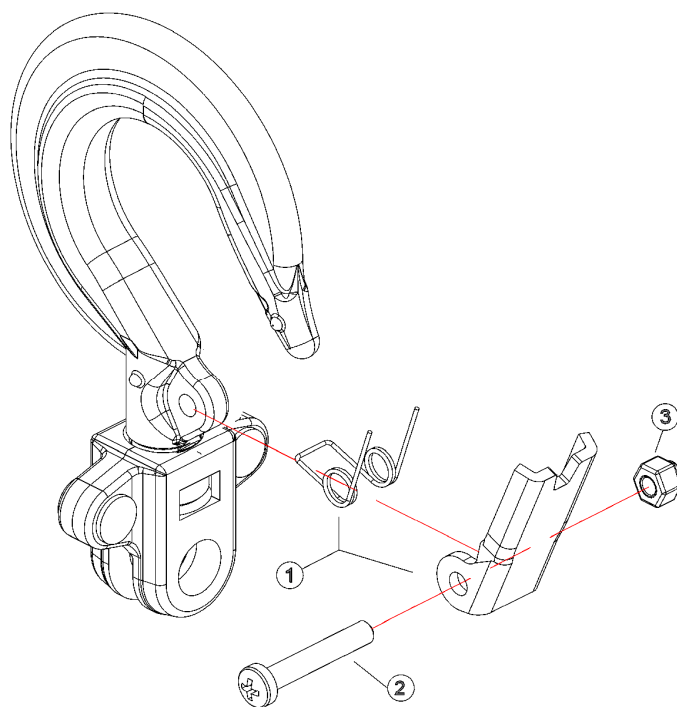
www.beta-tools.com – info@roburitaly.com

CODE	LEVER HOIS	WLL Kg
081460902	8146C	0.25
081460908	8146	0.75
081460915	8146	1.5
081460930	8146	3.0
081460960	8146	6.0

Safety latch for upper hook



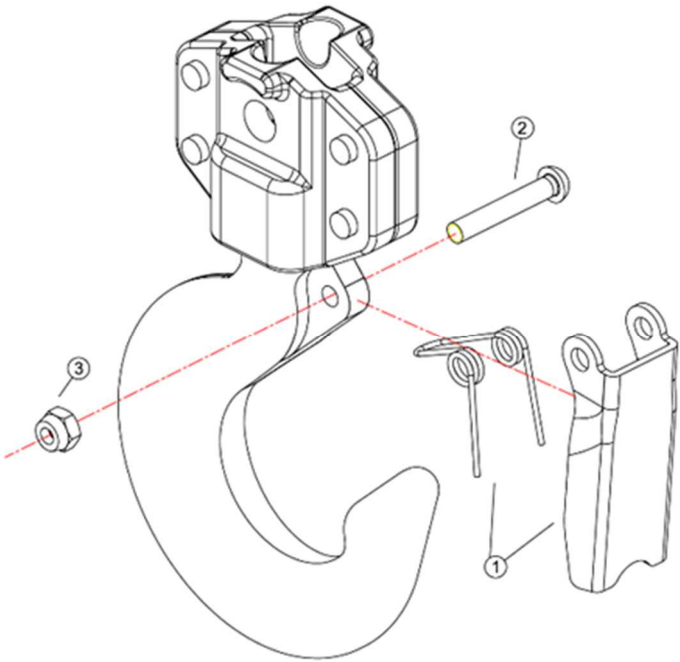
Item 8146



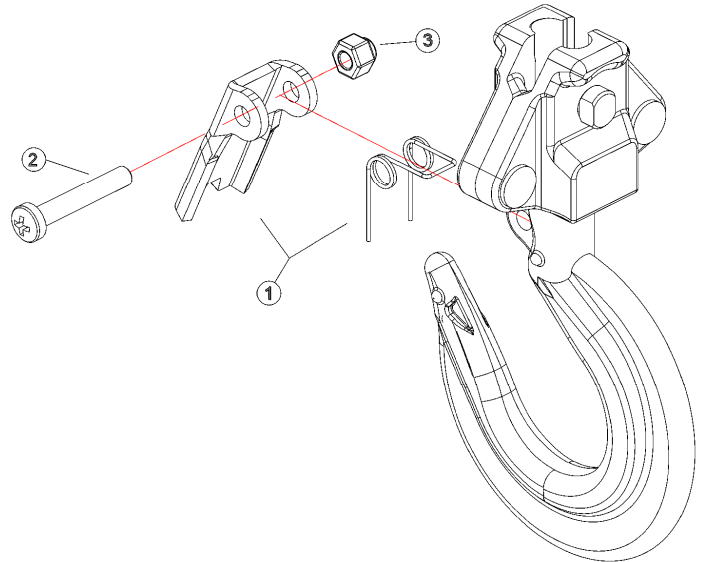
Item 8146C

- 1) Align the holes of the spring and the latch with the related hole on the hook.**
- 2) Insert the screw in the related hole on the hook.**
- 3) Screw the nut and tighten.**

Safety latch for lower hook



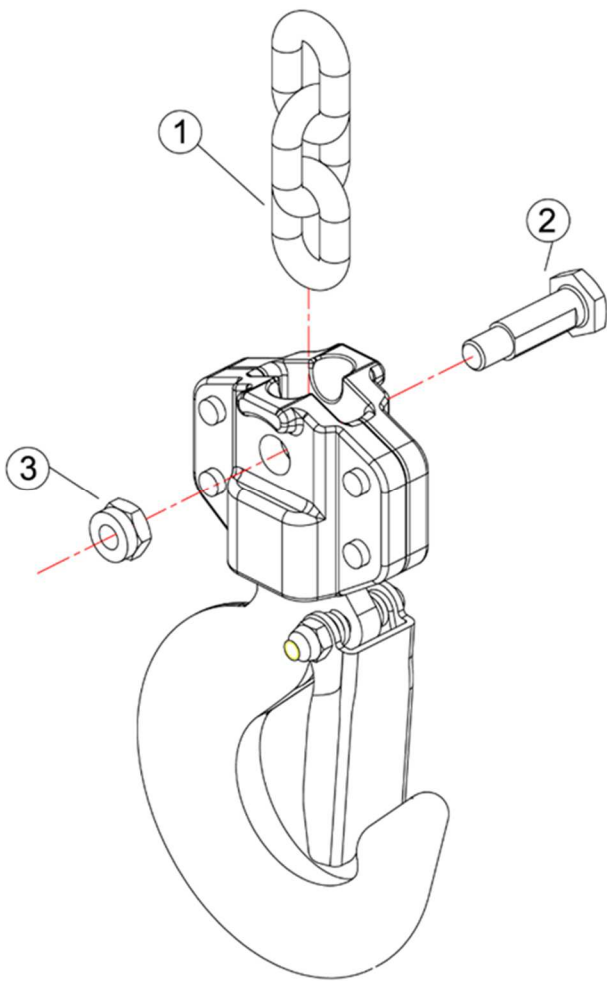
Item 8146



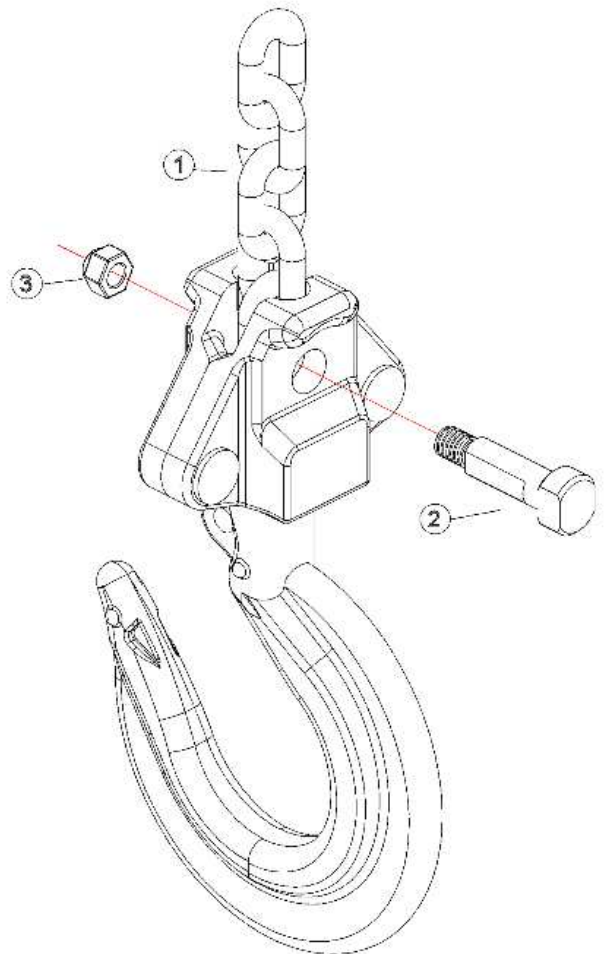
Item 8146C

- 1) Align the holes of the spring and the latch with the related hole on the hook.**
- 2) Insert the screw in the related hole on the hook.**
- 3) Screw the nut and tighten.**

Chain lock pin



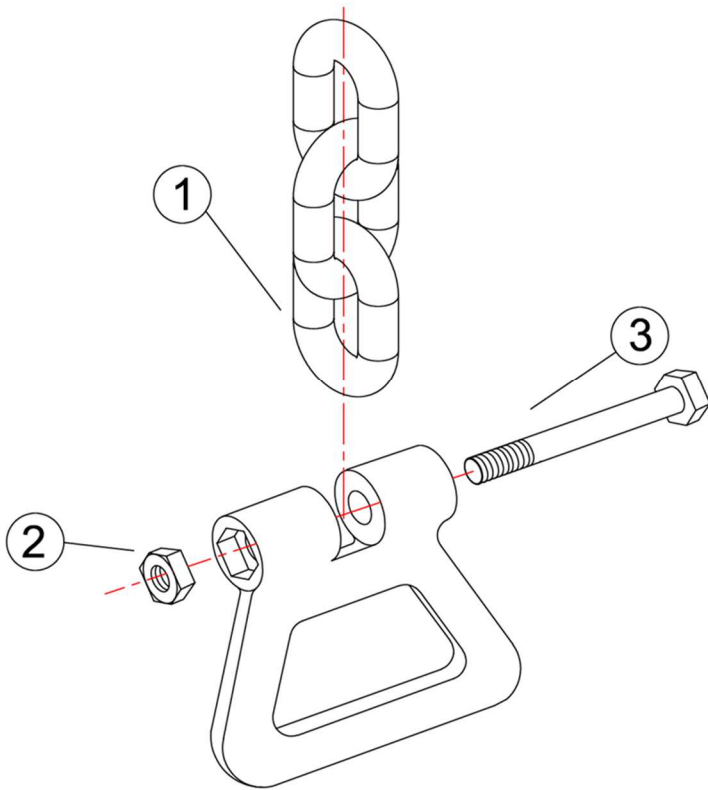
Item 8146



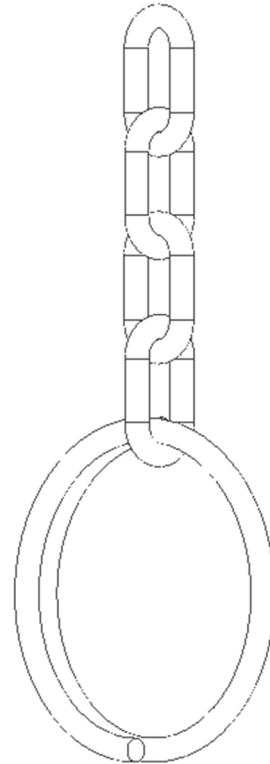
Item 8146C

- 1) Insert the chain link in the own seat inside the hook.**
- 2) Insert the screwed pin in the related hole on the hook.**
- 3) Screw the nut and tighten.**

End of run



Item 8146



Item 8146C

Item 8146

- 1) Insert the last link of the end chain in the slot on the end stop.**
- 2) Insert the nut in the related seat on the end stop.**
- 3) Insert the screw in the related hole on the end of run and tighten.**

Item 8146C

Insert the ring in the last link of the end chain.