

3069
Manual pallet jack

CE

Professional manual pallet jack for handling differently sized pallets. The frame provides remarkable firmness and sturdiness, for intensive daily use.

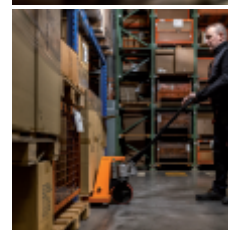
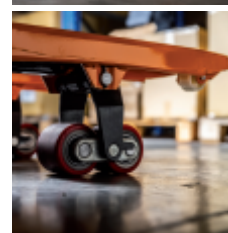
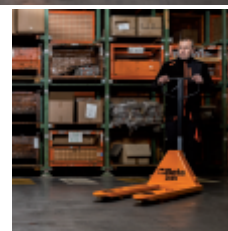
Features:

- 2 steering wheels, 200x50 mm, made of PU
- double front rollers, 80x70 mm, made of PU
- pallet access entry and exit rollers
- depth stop notch
- lowering speed control valve
- safety overload valve
- 3-position operating lever

 69,5 kg

Technical data:

- maximum capacity: 2500 kg
- overall length: 1550 mm
- fork length: 1150 mm
- fork width: 540 mm
- individual fork width: 160 mm
- lever height: 1230 mm
- max. lifting height: 115 mm
- pallet storage corridor: 800x1200 lengthwise: 1805 mm
- turning radius: 1347 mm



		art.
	030690000	3069