

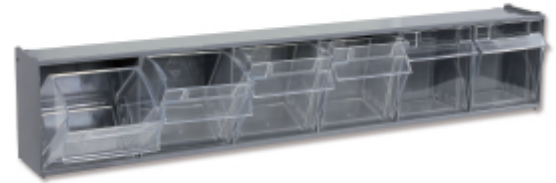
PM/6C

**Wall-mounted smallwares holder with 6 tote trays, made from plastic, with support**

- Interior dimensions: 80x60 mm
- Can be used with tool wall systems: C45PRO 2.0, RSC50 2.0 and RSC55

📦 970 g

📏 600x115x95 mm



		art.
	088880440	PM/6C

